

CRISIS RESPONSE NETWORK ANNUAL REPORT



2025

Image: Reuters

+27 76 328 5889

inbox@crisisresponsenetwork.net

www.crisisresponsenetwork.net

Contents

About this Report	3
Director's Note	4
From the Board	6
Our Vision	7
Our Team	8
2025 Challenges	9
Financials	12
Year in Numbers	15
Projects	16
2025 Events	39
Looking Ahead	43
Meet our Partners	46
Thank You	47
Glossary	48
Contact Us	49



About This Report

This annual report documents Crisis Response Network's work during the 2025-2026 financial year that was marked by widespread global crisis and sustained local response. It brings together stories, data, and reflections from partners serving communities affected by conflict, displacement, disaster, and long-term instability.

Within these pages, readers will find an overview of CRN's approach, highlights of impact across multiple high-risk contexts, reflections on the challenges faced in 2025, and a clear view of priorities for the year ahead. The report is grounded in the experiences of grassroots partners and communities, offering insight into both the complexity of today's humanitarian landscape and the role of locally led responses in fostering resilience and dignity.



Director's Note

As I reflect on 2025, I am struck by the weight of a world living through overlapping crises, and by the quiet courage of those who continue to serve faithfully within them. This has been a year marked by profound loss, escalating conflict, and shrinking humanitarian space. CRN mourns the thousands of lives lost and the many more who continue to suffer due to crisis, and we urge all organisations and combatants with the capacity, influence, and mandate to take immediate action to protect civilians and ensure life-saving relief reaches those in need.

At the same time, this year has reaffirmed why Crisis Response Network exists. Across contexts as varied as Gaza, Ukraine, Afghanistan, Uganda, Mozambique, Myanmar and South Africa, we have witnessed how locally rooted partners remain present long after headlines fade. They continue to show up—listening, adapting, serving, and restoring dignity in ways no external intervention could replicate. Walking alongside these partners has reminded us that meaningful humanitarian response is not only about scale or speed, but about relationship, trust, and perseverance.

As we continue to shoulder the burdens of those enduring unimaginable suffering in crisis zones, we find ourselves humbled and transformed in the process. Crisis has a way of testing who we think we are—our patience, our faith, and our compassion. It unsettles routines and raises questions without easy answers, and yet, in the very heart of pain, God continues His work on both sides.

Through our grassroots partners, we not only walk alongside those in crisis, but their struggles also invite us into deeper reflection, revealing the places in our own hearts where His grace is still shaping us. In the ashes of sorrow, there is also the unexpected joy of friendship and the call to follow Him more closely.



2025 also challenged us internally. We said farewell to valued team members and navigated financial constraints that required careful prioritisation and stewardship. As a small organisation, these moments tested our capacity and focus. Yet they also clarified our calling: to go deeper rather than wider, to strengthen what is already working, and to remain faithful to a model that centres local leadership and long-term restoration. Even in seasons of limitation, we have seen how God continues to connect the right people, resources, and opportunities at the right time.

What sustains me most is the shared identity we hold with our grassroots partners. This work is not transactional; it is deeply relational. We are co-workers in the same mission—bringing hope to the poor, healing to the broken-hearted, and dignity to those whose lives have been fractured by crisis. **We do not carry this burden alone, nor were we meant to. Together, we share the weight, the grief, and the hope.**

As we look toward 2026, we do so with humility and resolve. The needs remain immense, and the global humanitarian landscape continues to shift. Yet I am confident that by staying rooted in partnership, accountability, and compassion, CRN will continue to play a meaningful role—small in size, but deeply relevant—in strengthening responses where they are needed most.

As we go into another challenging year, our hearts hold both sorrow and gratitude—sorrow for the ongoing suffering around us, and deep gratitude for your steadfast support that brings light into the darkest places.

Thank you to our partners, donors, and supporters who continue to walk this journey with us. Your trust and commitment make it possible for hope to take root, even in the most fragile places.

Yolande Korkie

Director of Crisis Response Network

Carry each other's burdens, and in this way you will fulfil the law of Christ."

— Galatians 6:2

"Hope is sustained not by the absence of suffering, but by the presence of people willing to walk alongside one another through it."

"Small in size, deeply relevant—because local leadership changes everything."





From the Board

It was my privilege to serve as board chairman during the past year. Our incredible CRN team represents diverse skills, perspectives, and a shared passion for serving others. Together we were able to create real impact where it matters most. There are many examples that wait to be discovered as you read through this report.

At the beginning of 2025 we identified Key Focus Areas where individuals and companies can invest in the development and growth of CRN and to help CRN to respond effectively to disasters around the world. These Key Focus Areas are still relevant as we move into 2026:

- Establish a Disaster Response Fund
- Effective Operational Response through Administrative, Financial and Emotional Support for co-workers and volunteers.
- Strengthening relationships with current Resource Partners
- Strengthening relationship and support of Grassroots Partners

As we move forward, it is essential to remain focused on our mission and adapt to the evolving needs in our world.

I want to challenge you to invest in one or more of these Key Focus Areas to ensure that our programs remain relevant, effective, and aligned with our long-term goals. CRN will continue to explore innovative ways to address challenges, seek new partnerships, and expand our impact.

Every contribution entrusted to CRN represents more than financial support. It represents trust and the shared belief that communities facing crisis should not stand alone. This approach enabled grassroots partners to respond quickly, sustainably, and with a deep understanding of the communities they serve.

I am looking forward to meet with potential investors and donors. Please contact me if you need more information or to discuss contributing and supporting any of the Key Focus Areas.

Theunis Scheepers

Our Vision



Crisis Response Network exists to strengthen and coordinate a global network of trusted grassroots partners responding to crisis. Working alongside locally rooted organisations, we support their readiness, response, and long-term restoration efforts so that communities affected by crisis can recover with dignity and resilience. Rather than acting as first responders, CRN serves as a connector—linking grassroots partners to the resources, relationships, and support they need to respond effectively. This approach enables local leaders to guide and own solutions that are timely, economically viable, and deeply attuned to their context, ensuring impact that lasts beyond the immediate emergency.

“We connect local strength to global support so communities can recover with dignity.”

Our Team

The heart of CRN is its dedicated team of staff and volunteers united by a shared commitment to serve communities in crisis with care, excellence, and compassion. By working together as a cohesive unit, we're able to create meaningful, lasting impact and ensure that those we serve are never forgotten.



Yolande Korkie

Director



Donnelly McClelland

Research & Grants



Alexandra Nyoni

SM & Resource Development



Shanice Chigumba

Monitoring & Evaluation



Kaisa Golding

Networking Relationships Liason

2025 Challenges | Navigating a World of Escalating Crisis

Across the globe, hundreds of millions of people—particularly women and children—are struggling to access even the most basic aid in emergencies. Yet not all crises receive equal attention. In 2025, this gap between human need and available support became increasingly visible and deeply concerning.

The Emergency Watchlist published by the International Rescue Committee describes the current global moment as a time of profound disorder: humanitarian needs are rising sharply while the systems meant to respond to them are weakening. Conflict, climate shocks and entrenched poverty are converging, even as funding, access and political will continue to shrink. Communities caught in these crises are facing not only immediate danger, but long-term uncertainty about whether meaningful help will reach them at all.

The Watchlist highlights a stark reality: although the 20 most fragile countries represent just over a tenth of the world's population, they account for nearly nine out of ten people in humanitarian need. These crises do not remain contained within borders. Forced displacement, hunger, instability and violence ripple outward, shaping an increasingly fragile global future. Without decisive and sustained action, millions more will be placed at risk.

Emergency Watchlist | International Rescue Committee

TOP 10

- Sudan
- Occupied Palestinian Territory
- South Sudan
- Ethiopia
- Haiti
- Myanmar
- Democratic Republic of the Congo
- Mali
- Burkina Faso
- Lebanon

OTHER WATCHLIST COUNTRIES

- Afghanistan
- Cameroon
- Chad
- Colombia
- Niger
- Nigeria
- Somalia
- Syria
- Ukraine
- Yemen

2025 Challenges continued...

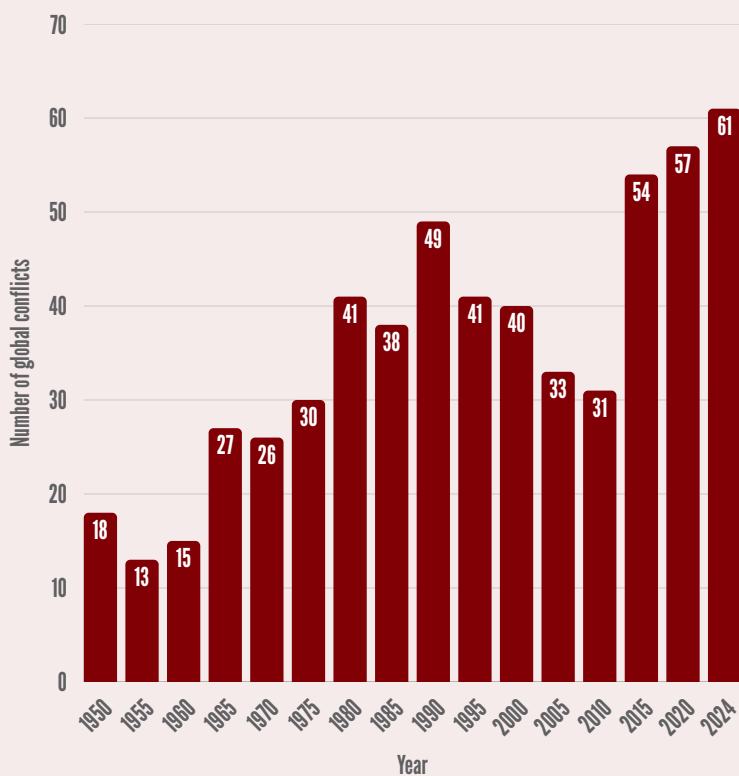
Conflict levels reached historic highs in 2025, with more active wars than at any point since the Second World War. One in seven people worldwide now lives under the threat of armed conflict. Civilians bear the heaviest burden. In crisis-affected countries, women face double the risk of violence compared to those in more stable contexts. Health systems collapse under prolonged strain, contributing to devastating outcomes. More than half of global maternal deaths and over a third of newborn deaths now occur in humanitarian settings.

Hunger has also intensified. Emergency-level food insecurity has reached its highest point in years, with tens of millions of people facing severe food shortages, malnutrition and rising mortality. In 2025, famine was officially confirmed in Gaza City—the first such declaration in the Middle East—underscoring how rapidly conditions can deteriorate when conflict, displacement, and blocked access collide.

Displacement continues at record levels. Although global numbers dipped slightly in 2025, this was largely due to forced returns and border restrictions rather than genuine improvements in safety. The vast majority of displaced people are hosted in low- and middle-income countries already stretched beyond capacity. Women and children make up most of those displaced, often enduring repeated cycles of loss, movement and trauma.

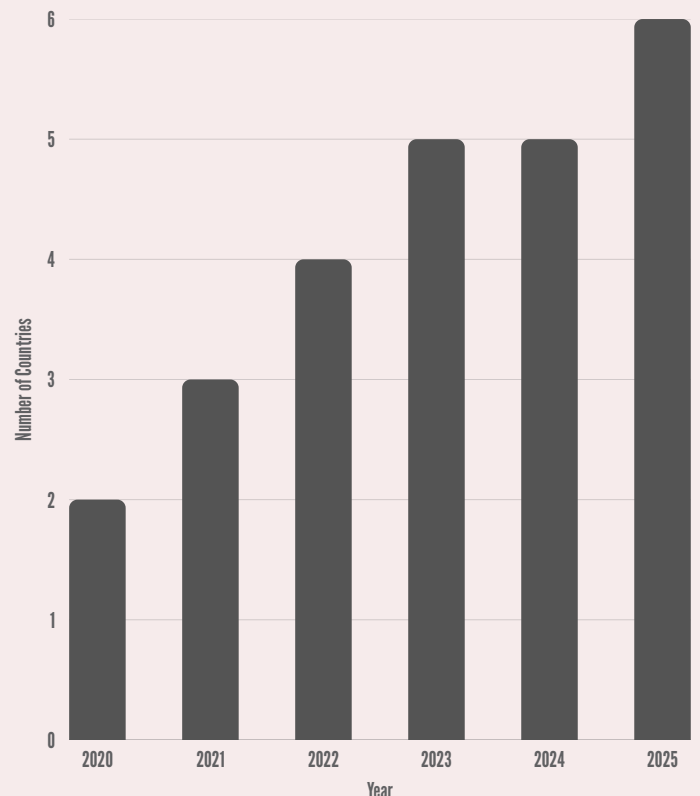
“The widening gap between human need and available support is the most devastating feature of their [IRC] report.”

Conflicts by the years



Data Source: Uppsala Conflict Data Program

Countries facing Catastrophic Food Insecurity



Data Source: Global Report on Food Crisis

CRN's Relevance in a Fragmented Humanitarian Landscape

In this challenging global environment, CRN's role as a small but deeply connected organisation has never been more relevant. Through sustained relationships with trusted grassroots partners, CRN is actively engaged in five countries ranked among the top 20 on the Emergency Watchlist—three within the top ten. These contexts are marked by severe conflict, catastrophic food insecurity, limited humanitarian access and dramatic funding shortfalls.

In **Gaza**, where basic conditions for sustaining life have been severely eroded, CRN's partners continue to serve communities facing repeated displacement, widespread destruction and persistent hunger. In **Uganda**, CRN supports South Sudanese refugees whose lives are shaped by ongoing instability in both their host country and their homeland, where political fragmentation, flooding, disease outbreaks and renewed conflict risks intersect. In **Myanmar**, years of uninterrupted conflict, natural disasters and shrinking aid have left millions trapped in hard-to-reach areas, with women and girls particularly exposed. In **Afghanistan**, where over half the population requires humanitarian assistance and women face extreme restrictions, CRN's locally rooted partnerships remain one of the few viable pathways to reach people with lifesaving support. In **Ukraine**, prolonged war continues to damage health infrastructure, displace families and disproportionately affect women-headed households and an ageing population.

Across all these contexts, CRN's focus is not on scale alone, but on presence, trust and sustained engagement—supporting responses that restore dignity, strengthen resilience and accompany communities beyond the first wave of crisis.

CRN works through grassroots partners in 5 of the 20 most fragile countries – where needs are greatest & access is hardest.

A world under strain — and the people paying the price

- 239 million people now require humanitarian assistance worldwide
(That's 1 in every 34 people on the planet)
- 20 countries, 89% of global humanitarian need
- Just 12% of the world's population lives in the most fragile contexts — yet they carry almost all humanitarian suffering



Record levels of conflict

- More active wars than at any time since World War II
- 1 in 7 people globally live under the threat of armed conflict



Women and children most affected

- 70% of women in crisis-affected countries experience violence
- 58% of global maternal deaths occur in humanitarian emergencies
- 37% of newborn deaths happen in crisis settings



Hunger at emergency levels

- 37 million people face emergency-level food insecurity (IPC Phase 4)
- The highest figure since 2021
- 2025 marked the first confirmed famine in the Middle East (Gaza City)



Displacement at historic highs

- 117.3 million people forcibly displaced worldwide
- 71% hosted in low- and middle-income countries
- In Gaza alone, nearly the entire population has been displaced — most of them women and children

Stewarding Hope | Financial Overview 2025-2026

Behind every number in this report is a story of crisis, courage, and compassion made possible through people who chose to respond.

It is with deep gratitude that we present Crisis Response Network's financial report for the year ending 28 February 2026. Every contribution entrusted to CRN represents more than financial support. It represents trust and the shared belief that communities facing crisis should not stand alone.

Our financial approach reflects CRN's commitment to strengthening locally led responses. Through a "double nexus" model, we allocate resources across humanitarian response, restoration and development, and readiness initiatives that help communities prepare for future crises. This approach enables grassroots partners to respond quickly, sustainably, and with a deep understanding of the communities they serve.

While global humanitarian funding declined significantly during the year, the dedication of local partners remained unwavering. Even in the face of reduced financial resources, communities continued to support one another through acts of generosity, volunteerism, and shared resources, reminding us that compassion often travels far beyond financial giving.

Financial Snapshot:

These financial figures tell the story of how generosity travels—moving from donors across the world into the hands of local partners who bring hope to communities in crisis.

Countries Impacted: 7

Financial Support Delivered: R419,817.00

In-Kind Support Delivered:

- **50 water filtration systems for communities in Myanmar**
- **30+ boxes of Rise Against Hunger food packs distributed in South Africa and Mozambique**
- **30 bicycles donated by Buffalo Bikes in Uganda to the South Sudanese refugee children**
- **R96,014.00 in essential supplies, including:**
 - **50 water filtration systems for communities in Myanmar - valued at R80,000**
 - **Rise Against Hunger food packs distributed in South Africa and Mozambique - valued at R13,200**
 - **Buffalo Bikes bicycle donation of 30 bikes - valued at \$5700**

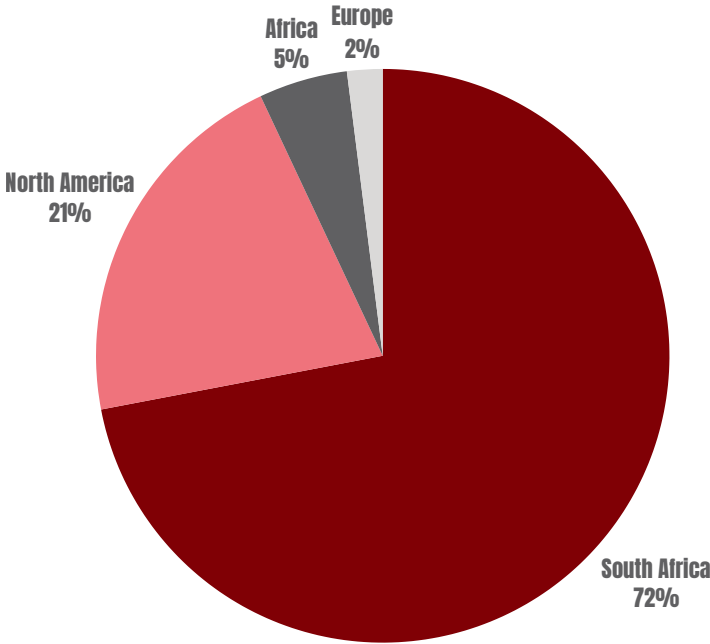
These contributions reflect how partnerships often extend beyond financial giving, enabling practical support to reach communities where it is needed most.

Where our Support came from

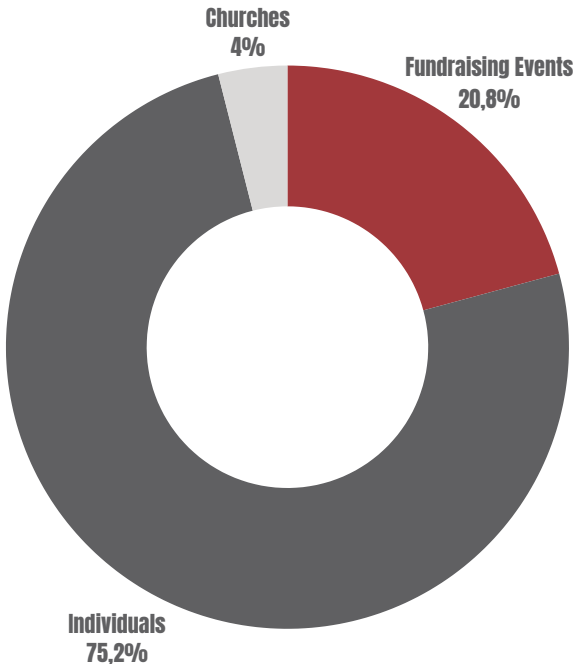
Individual donors remained the primary source of support, while fundraising initiatives continued to play a significant role in mobilising resources for communities in crisis. In-Kind donations contributed significantly this year compared to 2024/25. South Africa has consistently contributed generously to CRN giving up to 3,5 times more than the US.

Every contribution entrusted to CRN represents more than funding—it represents faith in the power of compassion to restore dignity and hope in places shaped by crisis.

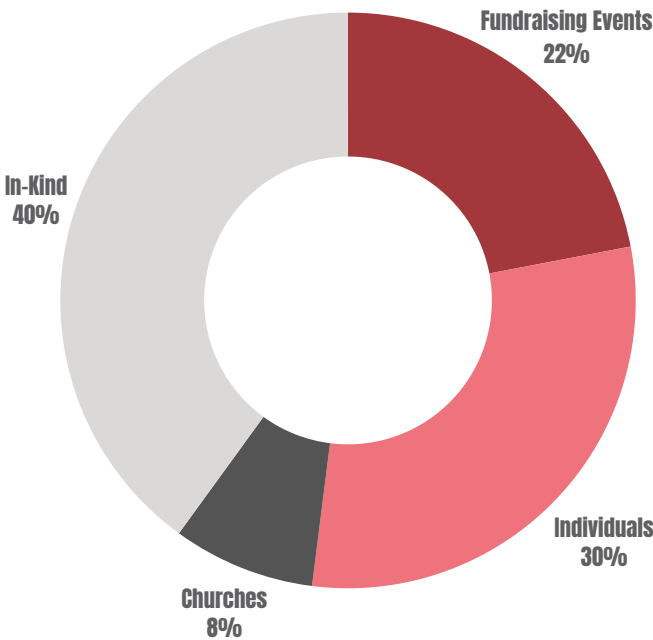
Donor Areas



Donations Received by Type 2024/25



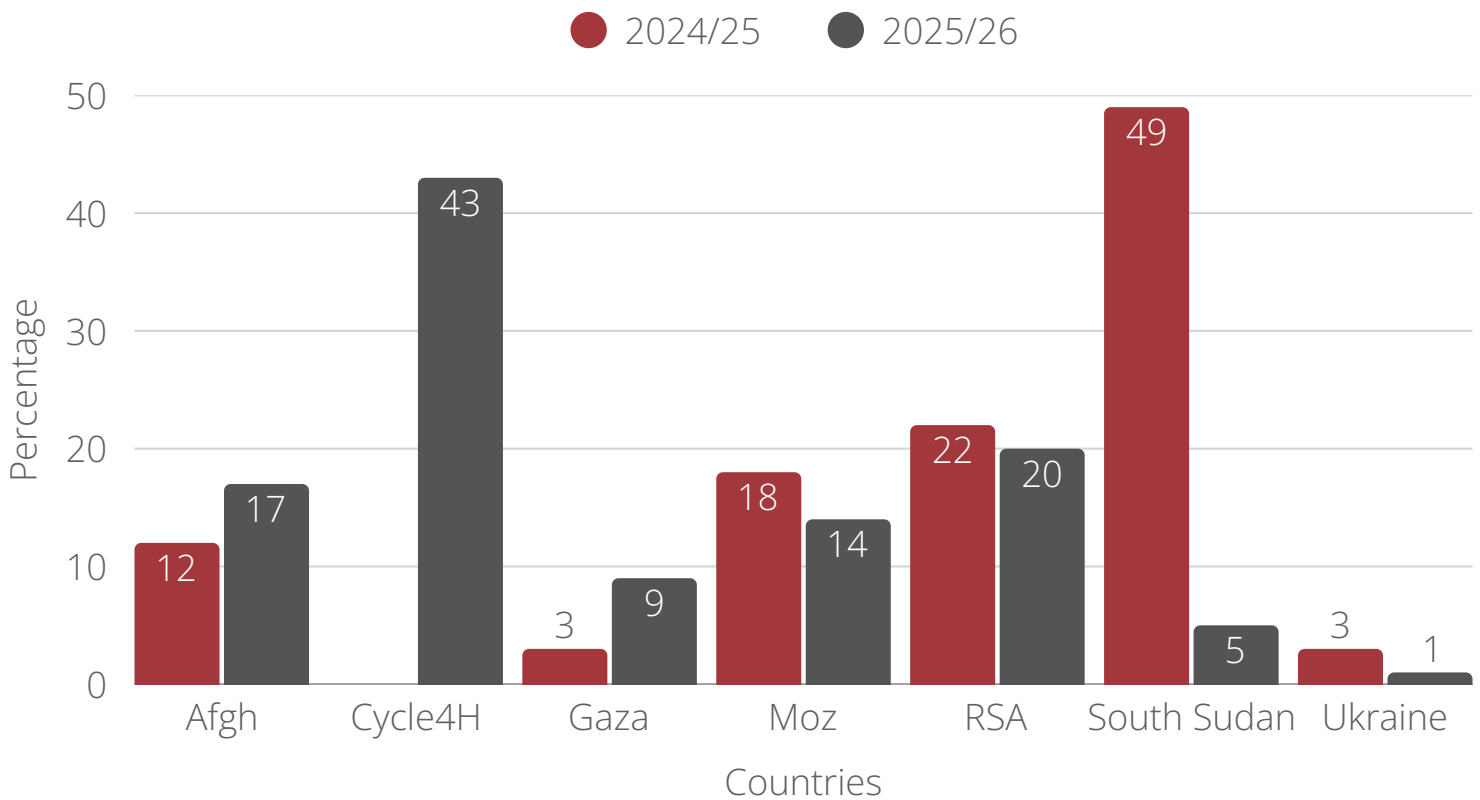
Donations Received by Type 2025/26



Where every Rand went | Project Distribution

CRN directed funds toward grassroots partners working in some of the world's most fragile contexts. Nearly half of project funding was directed through the Cycle 4 Hope initiative, supporting locally led resilience and humanitarian responses.

Comparison of percentages per project paid out



**graph only depicts financial payouts and does not include in-kind donations*

Financial Insights

Fundraising initiatives gained momentum

The **Cape Epic & Art Auction** generated more support than the previous year, helping offset declines in other areas.

Church giving increased

Economic pressures experienced by congregations did not impede church-based donations during the year, showing that trust is growing between CRN and the church community.

Growing trust in CRN's stewardship

More donors chose to give general-purpose donations, allowing CRN to allocate funds where needs were most urgent.

Grassroots partners remain first responders

Even where financial resources were limited, local networks continued responding through volunteer labour, shared resources, and community support.

OUR YEAR IN NUMBERS

CRN partnership highlights

60
bicycles
delivered to
secondary
learners in
Rhino Camp



7
countries served
through sustainable
grassroots
partnerships



3,024
food packs
delivered to
food victims
in Mozambique

2 NEW PROJECTS!
• Bioem Shelter
• Myanmar

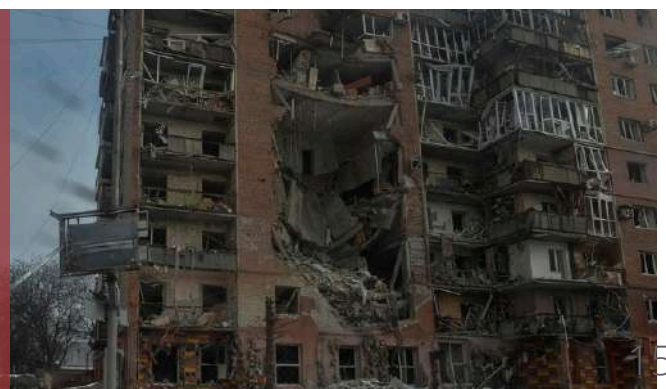


100 +
families supported
with life-saving aid
in Afghanistan after
the earthquake



81
children remained in
school due to donated
school fees

16
paid local roles
sustained across
education,
humanitarian, and
health sectors



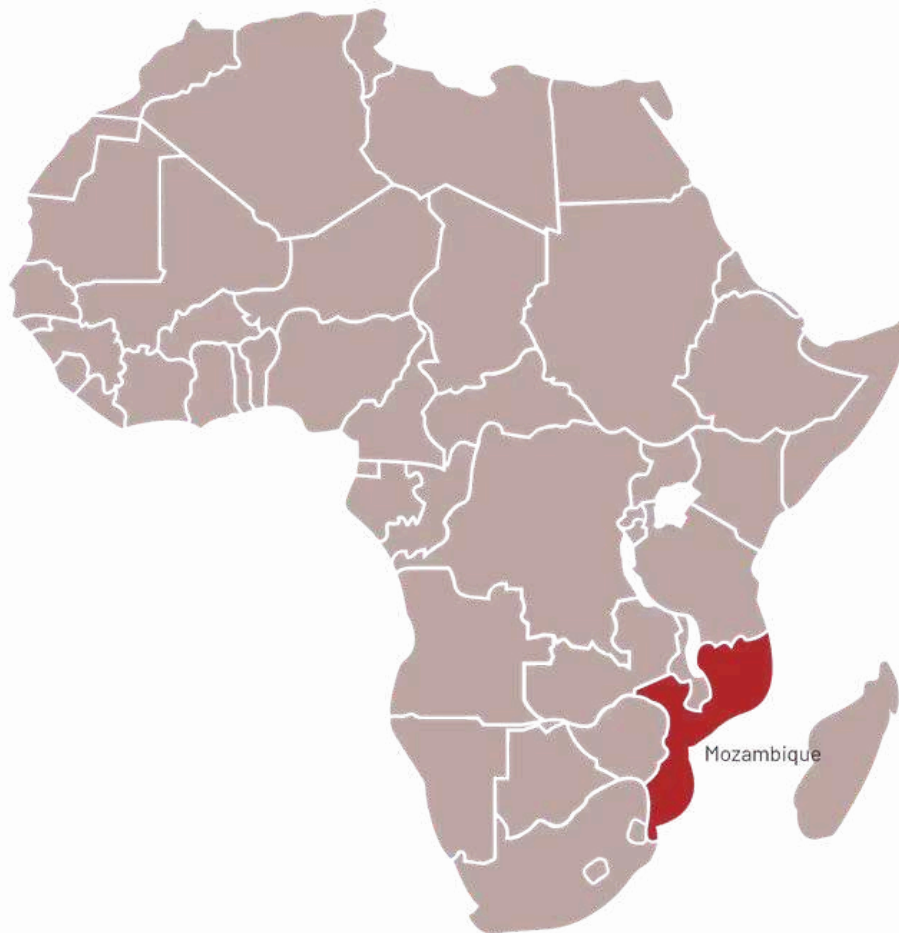
PARTNERSHIPS & PROJECTS



Local partners. Life-saving impact. Restored hope.



MOZAMBIQUE



- 3,024 food packs delivered via airlift in two emergency missions
- Each food pack fed 4–6 people
- Rapid-response partnerships activated within days of flooding

"Thank you very much, it wasn't easy but thank God I managed, it was a good experience, but a necessary challenge. And thank you very much to all of you who prayed so much for me yesterday. Thank you"

- **Alfonso - Local distributor of aid**

MOZAMBIQUE | Flood Response

Severe flooding swept across Mozambique following weeks of heavy rain, submerging entire communities and disrupting daily life on a massive scale. Gaza Province was among the hardest hit regions, with up to 40% of the province underwater. In many areas, homes were completely submerged, forcing families to shelter on rooftops for days while floodwaters surrounded them.

The impact on livelihoods was devastating. Vast stretches of agricultural land were destroyed. Where banana plantations once stood, only waterlogged dams and debris remained. Overflowing rivers inundated towns and farmland, while key infrastructure collapsed. Maputo, Sofala, and other provinces also experienced severe flooding, road washouts, and damage to essential services.

More than **400,000 people across the country have been affected**. In Gaza Province alone, over 300,000 people were displaced, seeking refuge in schools, churches, and temporary shelters. Thousands remained stranded as roads and bridges were destroyed, cutting off entire communities. Movement along major rivers became increasingly dangerous, and navigation on parts of the Limpopo River was suspended due to hazardous conditions, debris, and reduced flow.

In this context, speed and proximity mattered. **Crisis Response Network** worked closely with **Rise Against Hunger** and **Mercy Air** to reach communities that were completely cut off by floodwaters. Rise Against Hunger mobilized emergency food supplies, while Mercy Air deployed aircraft capable of reaching areas inaccessible by road or river.





Mercy Air completed two flights into Xai-Xai, delivering:

- 34 boxes on the first flight
- 50 boxes on the second flight

This brought the total to **84 boxes, equaling 3,024 emergency food packs** delivered to flood-affected families.

What made this response effective was not only the ability to fly in aid, but the strength of local networks already in place. With roads washed away and rivers impassable, local community members used small rubber boats to transport food packs, buckets, and bags through flooded areas. Churches played a central role, providing dry firewood, preparing hot meals in accessible locations, and identifying families most in need. These local actors ensured that aid reached the right people **quickly and with dignity**.



Despite the scale of destruction, this response demonstrated the **power of partnership**. International support combined with local knowledge allowed assistance to move even when conventional access routes failed. As communities begin to look ahead, the next phase will be critical. Shelter materials and agricultural inputs will be essential as families face a growing season with crops and plantations completely destroyed.

CRN remains committed to working alongside local churches and partners on the ground. This approach — strengthening and supporting those who are already present — continues to be the most effective way to deliver timely, relevant, and life-saving humanitarian aid in moments of crisis.



UGANDA



- Values-based life skills and sexuality education delivered to children and youth
- Teenage pregnancy rates reduced by up to 80% in targeted zones
- School access improved through education support and mobility initiatives
- Livelihood and agriculture projects supporting women and widows

“When children know their values they are able to make informed decisions. They can make smart choices for a smart life.”

Data Robert, Local grassroots partner

UGANDA | EDUCATION & SUPPORT

Rhino Camp Refugee Settlement is one of the largest refugee settlements in Uganda, home to more than **155,000 refugees**, the majority of whom have fled conflict in South Sudan.

Children make up approximately **60% of this population**, with many having experienced profound loss, displacement, and trauma at a young age. Some arrived unaccompanied, having witnessed violence or the death of parents and siblings, and now live in child-headed households or under the care of relatives and community caregivers.

In this context, access to education and consistent emotional and spiritual support is both a lifeline and a long-term investment. CRN partners closely with Hope Filled Children and Women Ministry, a refugee-led ministry embedded within the Rhino Camp community and part of the local church. Led by Pastor Juma and his team, themselves refugees, this partnership has become one of CRN's benchmark projects, reflecting the power of locally driven, deeply relational humanitarian work.

Hope Filled Children and Women Ministry provides holistic care for some of the camp's most vulnerable children — those with one or no parents, or who have been abandoned.

They offer spiritual mentorship, psychosocial care, and encouragement, while also doing everything possible to keep children in school. Despite having very limited resources, the team contributes personally by running a small shop in the camp, using its income to help cover school-related costs.

CRN has supported this project since 2022. Over the years, between **55 and 87 children** annually have been supported with school fees, books, and exam costs. In the past year alone, **81 vulnerable children** were sponsored to attend school through targeted donations from CRN supporters. The average cost for one child to attend school in the camp is modest — approximately USD 40 (R700) per year — yet the impact is profound.

Education in refugee contexts is transformative. Sustained access to schooling significantly reduces intergenerational poverty and lowers rates of early marriage and school dropout, particularly among girls.

Alongside education support, Hope Filled Children and Women Ministry continued to invest in psychosocial and spiritual care. In May, the team hosted a dedicated programme for 41 children, combining counselling, encouragement, and play to prepare them emotionally and mentally for the school year.



Equipping Young Lives through Values-Based Education - Smart Choices for a Smart Life

One of the key challenges identified within the camp is the persistence of Child, Early, and Forced Marriage (CEFM). In displaced settings, girls under the age of 18 are often married prematurely, frequently without full consent. These practices are commonly driven by poverty, entrenched cultural traditions, or attempts to secure family survival. While sometimes viewed as protective, early marriage significantly undermines a young person's right to education, health, and personal agency, and is closely linked to increased rates of teenage pregnancy, gender-based violence, and long-term emotional harm.

To address this need, the ministry introduced Smart Choices for a Smart Life, a holistic, values-based sexuality and life-skills curriculum developed by Accelerated Education Enterprises. Delivered during Sunday classes and informal learning spaces, the programme equips children and youth with essential knowledge about their bodies, personal boundaries, decision-making, and their inherent worth and rights.



The Smart Choices curriculum is tailored for learners from Grade R through to Grade 12, ensuring content is age-appropriate and developmentally sensitive at every stage. Since November 2025, these classes have been running consistently in Ofua 4, with plans for continued implementation.

Through this programme, children are being equipped not only with information, but with values, confidence, and the ability to navigate uncertain and high-risk situations. As the initiative continues, Hope Filled Children and Women's Ministry anticipates further positive outcomes, including sustained reductions in teenage pregnancy, child marriage, and long-term vulnerability linked to poverty.

Together, this collaboration is investing in prevention, dignity, and hope—helping to shape healthier futures for children growing up in displacement.

By strengthening trusted, refugee-led partners like Hope Filled Children and Women Ministry, CRN continues to demonstrate that sustainable, effective humanitarian aid is built through proximity, trust, and long-term commitment.



- 81 children went to school
- 41 children received psychosocial, spiritual care and are enrolled in the Smart Choices program

UGANDA | Cycle for Hope

Riding for Access and Opportunity

From 8–15 December 2025, a dedicated team of seven cyclists undertook an inspiring 800 km journey from Kampala to Arua to champion Crisis Response Network’s commitment to improving access to secondary education for young people in refugee settlements. Riding on behalf of students in Rhino Refugee Settlement, the team delivered 60 bicycles to secondary school learners.

In many refugee contexts, barriers to schooling are stark: an estimated 60% of school-aged children in refugee camps are unable to attend secondary school, often because of distance, safety concerns, and the physical burden of long daily walks. For these young people, walking up to 10 km each way to class is common.

Bicycles change that. By reducing travel time and physical strain, they improve reliable daily access to school, increase participation in classroom learning, and create space for students to rest, study, and engage more fully in school life. Beyond transport, these bicycles support wellbeing, confidence, and community resilience, reinforcing CRN’s mission to expand equitable educational opportunity to those in crisis contexts.

Led by Olympic cyclist Charles Kagimu, the team cycled for five consecutive days, covering long distances and spending up to eight hours per day on the road. Thanks to the generosity of sponsors and faithful donors, the initiative delivered 52 bicycles at the conclusion of the ride, with the remaining eight bicycles distributed in February 2026.

We extend our heartfelt gratitude to every sponsor, donor, and participant whose commitment made Cycle for Hope 2025 a success.



These bicycles represent far more than mobility — **they are pathways to education, empowerment, and a brighter future for refugee youth.**



SOUTH AFRICA



- Rural children supported through after-school education programmes
- Year-long nutritional support provided to vulnerable learners
- 21 women and 11 children sheltered and supported in the Free State
- First shelter-based accredited entrepreneurship degree pathway launched

Through nutrition, education, and pathways to economic independence, CRN partners are restoring dignity and long-term stability for vulnerable women and children.

SOUTH AFRICA

Strengthening Communities through Nutrition, Education, and Pathways to Independence

In South Africa, Crisis Response Network engaged across multiple provinces, partnering with trusted organisations to address **food insecurity, educational vulnerability, and long-term restoration for women and children at risk**. While the contexts differed, the focus remained consistent: strengthening dignity, supporting local leadership, and ensuring that immediate relief is paired with sustainable pathways forward.

Nourishing Education in the Western Cape

In the Western Cape, CRN partnered with the **Anna Foundation** during the Absa Cape Epic, supporting their work among rural children on farms and at underserved schools. The Anna Foundation's after-school programmes run daily from 14:00 to 17:00, addressing both the educational and social needs of children while building lifelong learning skills, self-worth, and resilience.



Recognising that learning cannot flourish without adequate nutrition, CRN—together with **Rise Against Hunger**—ensured that hungry and growing bodies were supported alongside academic enrichment. During the Absa Cape Epic week in 2025, CRN visited Lorraine School and the surrounding Rawsonville community to hand over Rise Against Hunger food packs. These food packs provided sufficient nutritional support to sustain the after-school centre for an entire year, ensuring that no child was left behind due to hunger.

Extending Reach through Strategic Logistics

In Mpumalanga, near White River, CRN joined forces with **Mercy Air** to support vulnerable communities beyond South Africa's borders. Together, they facilitated the distribution of Rise Against Hunger food packs to communities in eSwatini and the Democratic Republic of the Congo. This collaboration leveraged Mercy Air's aviation and logistics capacity to ensure that food reached hard-to-access areas, demonstrating how strategic partnerships can extend impact far beyond a single location.

Restoring Futures for Women and Children in the Free State

In the Free State, CRN's work focused on long-term restoration through partnership with Bloem Shelter—a safe home for women and children fleeing gender-based violence and extreme vulnerability. The shelter currently provides care and protection to **21 women and 11 children**, offering a space for healing, stability, and renewed hope.

Looking beyond immediate safety, CRN is supporting Bloem Shelter to become the first shelter in South Africa to implement the Pathway to Holistic Development programme through the Global University of Lifelong Learning. Through this initiative, women who successfully complete the programme will obtain a Bachelor's degree in Entrepreneurial Studies through an active, applied learning model.

This pathway recognises that courage alone is not enough when women transition out of shelters. In collaboration with the School of Financial Planning Law, CRN will facilitate training in personal, spiritual, and professional development, alongside seed funding to support the launch of small businesses. Participants will gain practical experience through open market participation and the University's Learning Festival.



The programme will run throughout 2026, with the first cohort expected to graduate toward the end of the year. Following graduation, CRN and Bloem Shelter will continue to walk alongside each woman to develop a sustainable exit strategy from the shelter. A longitudinal research study will track this cohort over several years, measuring outcomes related to economic independence, stability, and long-term wellbeing.

Building Sustainable Change Through Partnership

Across South Africa, CRN's work reflects a commitment to holistic impact—addressing immediate needs such as hunger and safety, while investing in education, skills development, and economic participation. Through trusted partnerships and locally led solutions, lives are being strengthened and futures reshaped with dignity and hope.

Through nutrition, education, and pathways to economic independence, CRN partners are restoring dignity and long-term stability for vulnerable women and children.



GAZA



- Emergency medical support delivered through local hospitals and clinics
- 350 vulnerable families receiving regular food assistance
- Youth programmes providing safe learning & healing spaces
- Prosthetics provided to child survivors of conflict-related injuries
- 16 paid local roles sustained

The goal was to bring comfort to 500 children in Gaza who have lost parents, who are sick, or injured by giving them each a soft doll. What was meant to be a one-month effort become a source of strength, sustained by the joy it brings: one doll, one smile, one child at a time.

GAZA

Restoring Hope and Healing in Gaza

In one of the most densely populated and conflict-affected regions in the world, **Shepherd Society** continues to live out its calling to love its neighbour and care for the poor. Based in Bethlehem and deeply rooted in local faith networks, Shepherd Society serves as a vital bridge between global Christian communities and people living amid ongoing crisis in Gaza. Their work reflects a faithful commitment to **presence, compassion, and practical care** in a context where suffering has become prolonged and complex.

Crisis Response Network supported Shepherd Society throughout the year through targeted financial contributions. This support strengthened Shepherd Society's ability to deliver emergency medical care, food distribution for vulnerable families, education and child protection programmes, and job creation initiatives.

Safe Spaces for Children and Youth

In 2025, Shepherd Society facilitated regular programmes for children and youth within a church in Gaza, creating one of the few remaining safe and nurturing spaces for learning and connection. Activities included academic support in Arabic, English, Mathematics, and Science, alongside recreational and creative workshops such as candle-making and wool crafting.

These programmes play a critical role in building resilience. In a context where children are repeatedly exposed to trauma and disruption, structured learning and peer interaction provide a sense of normalcy, emotional healing, and hope for the future.

Medical Care and Trauma Support

Medical and trauma support included the provision of essential medical supplies, medicines, and assistance with urgent surgical needs. A particular focus has been placed on the emergency unit at Al-Ahli Hospital, where Shepherd Society also distributed locally made soft dolls to children receiving treatment—small gestures that bring comfort and reassurance in moments of fear.





In addition, Shepherd Society supports a clinic operating three days a week, providing primary healthcare services to the Christian community and surrounding neighbourhoods, ensuring continuity of care despite strained health systems.

Toward the end of 2025, Shepherd Society launched a new and critical initiative: **Prosthetics for Children**. This project provides life-changing prosthetic support to children who have lost limbs as a result of the conflict, restoring mobility, dignity, and the possibility of independent futures.

Food Security for Vulnerable Families

Food insecurity remains one of the most urgent challenges facing families in Gaza. Shepherd Society coordinates food distribution through a church-based hub, serving both the congregation and the wider community. **Approximately 350 highly vulnerable families** receive regular food parcels.

For individuals who are bedridden or unable to collect supplies, cooked meals are delivered directly to their homes.

Job Creation and Community Stability

Currently, **16 paid volunteers** are employed in Gaza, contributing to education, medical assistance, and humanitarian operations. These roles not only sustain critical services but also provide income in an economy where employment opportunities are scarce.

A particular emphasis is placed on employing teachers, enabling Shepherd Society to reach children who have no access to formal schooling. Through these roles, children receive education, routine, and encouragement—key protective factors in prolonged crises.

A Light of Hope in a Place of Darkness

Through all its initiatives, Shepherd Society demonstrates Christ's love to a predominantly Muslim population while strengthening and sustaining the faith community in Gaza. By enabling families to remain in their communities with dignity and purpose, Shepherd Society serves as a consistent light of hope, presence, and witness in one of the world's most challenging humanitarian contexts.



- 350 vulnerable families received food parcels throughout the year
- 16 volunteers in Gaza are paid as a way to support job creation
- 3 x week a Medical Clinic is operated
- 200+ children and youths participated in education and recreational projects in Gaza



AFGHANISTAN



- Tens of thousands reached annually through health and community programmes
- Maternal and infant mortality reduced by up to 80% in programme areas
- Community-based birth and health education delivered to men and women
- Emergency aid and livelihood training integrated across multiple provinces

Life-saving maternal health and dignity-restoring livelihoods reaching the most vulnerable.

AFGHANISTAN

Faithful Presence and Life-Saving Impact in a Fragile Context

Afghanistan remains one of the most complex and fragile humanitarian contexts in the world. Decades of conflict, economic collapse, and restrictions on access to education and healthcare have left millions of people living in extreme poverty and isolation. Today, the vast majority of Afghans live below the poverty line, with millions experiencing acute hunger and limited access to even the most basic services. In this environment, sustained and trusted local presence is not only rare—it is life-saving.

Crisis Response Network partners with trusted local teams in Afghanistan whose identities must remain confidential for security reasons. These partners have demonstrated extraordinary commitment, courage, and consistency in serving some of the hardest-to-reach communities in the country. Together, they have identified four strategic priorities to address the most critical needs facing Afghan communities. CRN currently supports two of these focus areas: Medical Training and Health Interventions, and Community Development, including emergency relief during disasters.



Medical Training and Maternal Health

Due to Afghanistan's severely limited medical infrastructure—particularly in rural areas—preventative health education and community-based care remain essential. CRN's partners implement extensive programmes that combine health education with direct medical, dental, and mental health services. Through their local presence across multiple provinces, these teams reach tens of thousands of Afghans each year who would otherwise have no access to healthcare.

A cornerstone of this work is a community-based health education programme focused on pregnancy, birth, and newborn care. The programme is delivered to both men and women, recognising that improved maternal and child health outcomes depend on whole-community understanding and support. Over a three-month period, trained male and female educators lead courses in rural villages, equipping families with practical, life-saving knowledge related to pregnancy, childbirth, and early infant care.

Afghanistan has long recorded one of the highest maternal and infant mortality rates globally. The country ranks 7th globally for maternal mortality rates. Research consistently shows that community-based birth preparedness and skilled education significantly reduce preventable deaths. In areas where this training has been implemented by CRN's partners, maternal and infant mortality rates have decreased by up to 80%, a remarkable outcome in a context where formal healthcare services are often inaccessible. These results reflect not only effective programming, but also deep trust between local educators and the communities they serve.

“Farah visited a relative whose baby had been born at 7 months and she noticed that the baby was not only small but also unwell. She unwrapped the baby and asked what they had put on the cord? It was dirt from the mud wall, which they assumed would help dry it out. Applying what she'd learned in the Maternal Health program, Farah asked for some antiseptic ointment, washed the cord, and applied it. On her next visit the baby was healthy, and everybody was happy and relieved!”



Community Development and Dignity Restoration

Prolonged conflict, displacement, lack of education, and widespread substance abuse have entrenched cycles of poverty across Afghanistan. Today, millions of Afghans are food insecure, with families regularly skipping meals or surviving on inadequate nutrition. Hunger, when left unaddressed, erodes health, dignity, and hope.

In response, CRN's partners integrate emergency relief into their work in every province where they operate, ensuring that immediate survival needs are met alongside longer-term development goals. Beyond relief, they focus on restoring dignity and self-reliance through economic empowerment. Individuals with little or no formal education are trained to start small, local businesses, enabling them to generate income through micro-enterprise.

These initiatives provide more than financial support—they restore confidence, purpose, and a sense of belonging within communities that have endured years of loss and marginalisation.

Sustained Impact Through Trusted Partnership

In a country where many interventions are short-term or externally driven, CRN's partners remain present, responsive, and deeply embedded in local communities. Their approach addresses both urgent needs and the underlying factors that perpetuate vulnerability, allowing families not only to survive, but to begin rebuilding their lives with dignity. These rapid life-saving interventions were mobilised after the earthquake on 31 August.



- 49% of population are women and children;
- 80% decrease in maternal and infant mortality rates for 2025
- 100+ people supported in the aftermath at the Aug Earthquake

MYANMAR



“Partnership turns donated resources into lasting impact, overcoming every obstacle to ensure hope, dignity, and clean water reach families when they need it most.”

MYANMAR | Disaster Recovery

In May 2025, CRN partnered with RYSR to bring practical hope to families in Myanmar who had been deeply affected by severe flooding. Through this partnership, 50 water filters were delivered to 39 families, helping provide access to safe, clean drinking water in the aftermath of disaster. Although the journey was not without challenges, the filters successfully made their way into Yangon after several logistical hurdles, before being transported by a dedicated ministry team onward to Mandalay and Sitkhaing. This effort reflects how, even in complex circumstances, committed collaboration can ensure life-changing resources reach the people who need them most.

This project is a powerful reminder of the importance of partnership and the impact of in-kind donations. By working together, CRN, RYSR, and the ministry team were able to maximize resources and turn donated water filters into lasting support for vulnerable families. Nearly one year on, the results continue to speak for themselves, as families have shared positive testimonies about the difference the filters have made in their daily lives. Access to clean water has not only improved health and safety, but has also brought dignity, resilience, and renewed hope as communities continue to rebuild.



“The water filters brought more than clean water—they brought resilience and renewed hope.”

UKRAINE



“People adapt. They show resilience. Somehow, they keep going.”

Ukraine

Faithful presence in prolonged crisis

For the people of Ukraine, the fourth year of full-scale war has carved deep wounds into the nation's resilience, resources, and sense of security. Yet in Kyiv, New Generation Church continues to stand as a beacon of hope—serving their neighbours with courage, compassion, and unshakeable faith. From the first day of the invasion, they have remained on the ground, feeding the hungry, supporting displaced families, caring for war widows, and creating safe spaces for children who have lost their fathers. As this painful milestone approached, we reached out to Pastor Viktor and his team to ask how they are doing and how we can pray with them. His reflection captures both the weight of the past four years and the steadfast hope that sustains their ministry.

Pastor Viktor describes the first morning of the invasion—24 February at 5:00 a.m.—as the moment life changed forever. In the years since, Ukraine has endured a scale of devastation that is difficult to fathom: millions wounded, killed, or permanently injured, entire cities destroyed, and hundreds of thousands of families displaced with nowhere to return. In Kyiv alone, approximately 2,000 apartment buildings in the church's vicinity remain without electricity, with winter temperatures falling between 2–10°C. Power often comes on for only two hours per day, leaving households struggling to stay warm, cook food, or simply survive the night.



Serving Under Fire

Throughout 2025, our partners in Kyiv continued to respond to urgent physical and emotional needs in their community:

- 5,000 meals provided through weekly meal outreaches
- 900 food parcels distributed to families with no income
- Hundreds of households supported with clothing, blankets (including electric blankets), and winter essentials
- Bundles of firewood and gas burners provided to help families cook and stay warm
- Youth camps hosted for children grieving the loss of their fathers
- Ongoing care for widows and newly displaced families

The prolonged crisis is taking a visible toll on mental health. Years of uncertainty, grief, and separation from loved ones have left many weary and emotionally depleted. Even so, New Generation Church continues to cultivate spaces of belonging and restoration—places where the displaced find friendship, community, and the presence of God.

And in these new relationships, we see a powerful truth: even amid war, new communities are forming, and lives are being transformed in ways that would not have been possible before.



2025 EVENTS

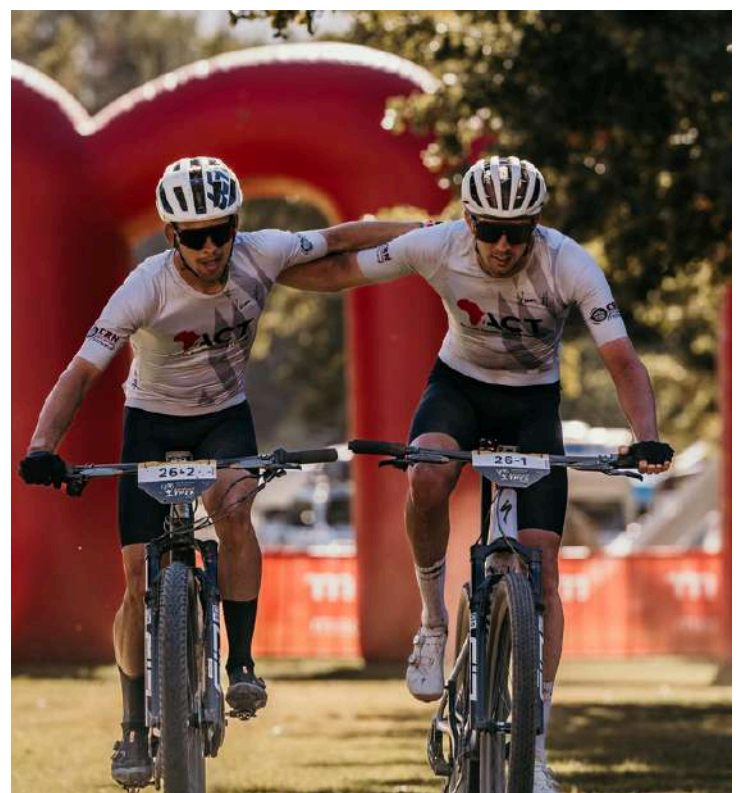


ABSA CAPE EPIC | MARCH 2025

We were privileged to be one of the official charities at the Absa Cape Epic for another year - this year was quite different to our first time around. We did not have an official rider team riding for us, but still had the opportunity to showcase who we are and what we do through a display table at the various race villages.

We were also grateful to Team Act (Pieter Korkie and Keegan Tullis) who wore our logo with pride, and did a little fundraising as they competed in the race, bringing awareness to us as an organisation through their efforts.

This year's experience reminds us of this quote from an anonymous author:
"Sometimes showing up is the most important thing you can do—even if all you bring is your presence."



REFUGEE ROUND TABLE

Welcoming the Stranger: Building Understanding and Compassion

In 2025, Crisis Response Network facilitated an online refugee roundtable focused on Welcoming the Stranger in the South African context. The gathering brought together faith leaders, practitioners, and individuals with lived experience to reflect on how churches can respond wisely and compassionately to the realities faced by refugees and foreign nationals.

The conversation reaffirmed a shared conviction that care for the stranger is central to the Christian faith. Participants reflected on Scripture's call to dignity, hospitality, and protection for those who are displaced, and shared how local churches are already responding—often quietly and at personal cost—through sheltering, counselling, and practical support during times of heightened vulnerability.

Alongside these stories, the roundtable explored both challenges and opportunities. Legal and documentation barriers, xenophobic violence, and economic pressure continue to place foreign nationals at risk. Yet participants identified practical ways forward, including supporting documentation processes, offering language assistance, strengthening relational support, and increasing awareness across faith communities.

By convening this dialogue, CRN created space for shared learning and collaboration, helping local faith communities move from fear and fragmentation toward informed action, dignity, and hope.

Convening faith leaders to strengthen compassionate, informed responses to refugees in South Africa.



CORNE THERON | WATER EVERYWHERE

In conjunction with Strauss & Co, esteemed artist Corne Theron donated a painting to CRN to be auctioned off in Cape Town. The proceeds were distributed amongst our active projects.

This original artwork was crafted over several months, and is specifically tributed to the vital humanitarian efforts of the Non Profit Crisis Response Network (CRN). Inspired by their global impact, this piece was created to raise both awareness and funds to support CRN's critical mission.

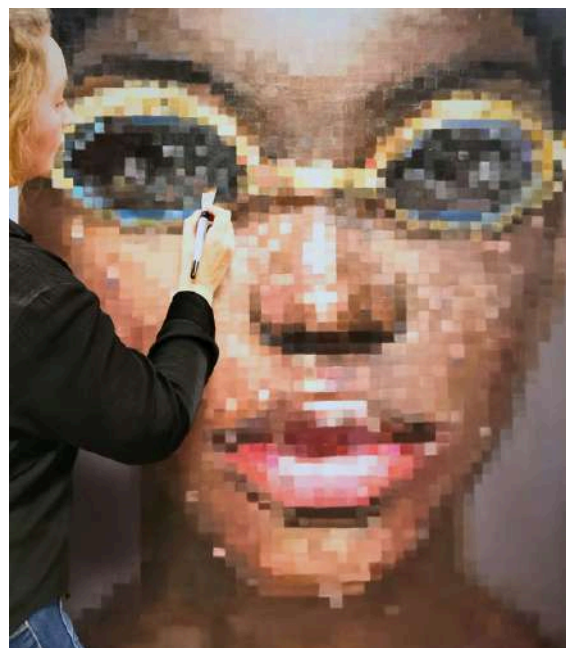
While it is challenging to highlight just one action from CRN's extensive global efforts, this piece was profoundly inspired by a specific project they undertook during a catastrophic flood in Mozambique.

Despite being surrounded by water, the people lacked access to clean drinking water. CRN's intervention, providing potable water amidst the flood, highlighted the irony of having resources all around us yet being unable to access them. This scenario mirrors the broader issue of how shared resources and knowledge can be abundant but remain inaccessible to those in need.

"Water Everywhere" is a diptych that explores the paradox of abundance and scarcity, inspired by the saying, "Water, water, everywhere, nor any drop to drink."

"Water Everywhere" aims to provoke thought and dialogue about the distribution and accessibility of resources, urging viewers to reflect on their own roles in this global challenge.

- *amended statement, Corne Theron*



Looking Ahead | 2026

As global crises have increased dramatically over the past five decades, the need for responses that are not only immediate, but are also sustainable has never been more critical. Humanitarian work does not exist in isolation; it operates within a complex web of global and local systems. When these systems are fragmented, suffering is prolonged. When they are connected—through trust, coordination, and shared purpose—communities are better able to recover, rebuild, and thrive.

Crisis Response Network enters 2026 with a renewed commitment to strengthening this connectivity. Our focus remains on working through established grassroots partners, supporting locally led responses, and connecting them with the resources required for long-term impact. Networking, when done with intention, becomes a powerful force—allowing smaller, trusted actors to respond effectively within some of the world’s most complex crises.

Gaza | Restoring Hope Through Prosthetic Care

CRN has launched a specialised medical initiative focused on children and adults who have lost limbs due to war-related injuries. In partnership with the Shepherd Society and the Bethlehem Arab Society for Rehabilitation (BASR), this project combines advanced technology with compassionate care.

Using 3D printing technology, prosthetic limbs are designed and produced in Bethlehem based on measurements taken in Gaza, then fitted through trusted local clinics and hospitals. Each prosthetic is custom-made, restoring not only mobility, but dignity, confidence, and hope. This initiative represents a rare blend of innovation and humanitarian commitment, offering tangible healing in a place where loss has become pervasive.



- **Custom 3D-printed prosthetic limbs**
- **Produced in Bethlehem, fitted in Gaza**
- **Restoring dignity, independence, and confidence**

- **Cost per limb: USD 1,500 – 15,000**
- **Partners: Shepherd Society & BASR**
- **Focus: Children and adults with war-related amputations**

Uganda | Education as a Pathway to Stability



- **Continued education support for vulnerable learners**
- **Exploring more cycling opportunities for refugee learners**
- **Community-led implementation in Rhino Refugee Camp**

- **Children supported: 87**
- **Annual cost per child: USD 45–120**
- **Outcome: Increased school retention & future livelihoods**

In Rhino Refugee Camp, CRN will continue supporting access to education for 87 vulnerable children throughout 2026, recognising education as one of the most effective tools for breaking cycles of poverty and displacement. Alongside this, we are exploring vocational training partnerships for older youth, responding to the growing need for practical skills and future livelihoods.

This work remains firmly rooted in local leadership, guided by partners who understand the daily realities of camp life and are deeply committed to their community's long-term wellbeing. Annual education support ranges from approximately USD 45 for primary learners to USD 120 for secondary learners.

Mozambique | Supporting Long-Term Recovery After Flooding

Following the devastating floods in Gaza Province, Mozambique—where nearly 40% of arable land was destroyed—CRN anticipates a prolonged and fragile recovery phase. The impacts extend beyond immediate displacement to increased health risks, food insecurity, soil erosion, and loss of livelihoods in an already impoverished region.

In 2026, CRN will continue supporting recovery efforts through the mobilisation of resources such as agricultural inputs, building materials, and water purification solutions. Sustained support will be critical to help communities rebuild resilience and reduce long-term dependency



- **Long-term recovery after severe flooding**
- **Focus on food security, health, and clean water**
- **Supporting one of Mozambique's poorest provinces**
- **40% of arable land destroyed in Gaza Province**
- **Needs: Agriculture inputs, water purification, building materials**
- **Phase: Recovery & resilience-building**

Strengthening Our Capacity for Impact

As CRN grows in reach, we are also strengthening our internal capacity. In 2026, we welcomed two new team members whose roles are vital to our future effectiveness. A dedicated Monitoring and Evaluation lead is helping CRN strengthen accountability, measure impact, and support evidence-based decision-making—an essential step for a small organisation committed to meaningful, lasting change.

We have also added a Global Resource Partner Developer, expanding CRN's ability to connect international partners into our grassroots network. With extensive experience across four continents in business, education, and refugee response, this role strengthens our vision that the whole can indeed be greater than the sum of its parts.

As we look ahead, we do so with humility and hope—trusting that through connection, collaboration, and faithful stewardship, even small networks can contribute to profound restoration.

In 2026, CRN is deepening locally led solutions—restoring dignity, rebuilding futures, and strengthening the systems that sustain hope.

Connecting Local Strength to Global Support



Meet some of our Partners



Member Care Southern Africa (NPC)

Hope Filled Children's and Women's Ministry

HopeAlive²⁶⁸



The New Humanitarian



Dear supporters, friends, donors + partners

Thank you for showing up.

Whether you gave, shared, read, prayed, or simply stood with us in spirit—your presence mattered. In a year marked by both challenge and quiet triumph, your belief in our mission helped carry stories of dignity, hope, and resilience farther than we could have imagined.

You reminded us that impact isn't always loud. Sometimes it looks like a steady hand, a kind word, or a quiet yes. And because of you, we were able to keep saying yes—to communities, to justice, to compassion in action.

We are deeply grateful for your trust, your generosity, and your continued partnership. This report is more than a summary of what we've done—it's a reflection of what we've done together.

Your Support Makes This Possible. Thank you! 

As a nonprofit, we rely on the generosity of donors, friends, and partners like you—not only to sustain our operations, but to uplift the grassroots changemakers we walk alongside.

Every contribution helps us:

- Keep our team equipped and responsive*
- Maintain the tools and platforms that carry stories of dignity and hope*
- Fund vital projects led by our local partners who know their communities best*

We don't exist without you. Your support fuels more than logistics—it fuels compassion in action, presence in places often overlooked, and the quiet power of showing up.

If you believe in what we do, please consider making a donation. Together, we can continue building a world where hope is not just spoken, but lived.

*With hope and gratitude,
Crisis Response Network*



GLOSSARY

Crisis - refers to a potential or active sudden, calamitous (natural, man made or security) event that seriously disrupts a community, group of people or individual, and causes human, material, economic and/or environmental losses that exceeds the ability to cope using available resources.

DRR - Disaster Reduction Response

IDP - Internally Displaced People

Man Made disasters - linked predominately to human action or inaction

MEL - Measurement, Evaluation and Learning

Natural disasters - linked predominately to conditions physical environmental conditions

NPO/NPC - Non-Profit Organisation /Non-Profit Company

Refugee - A person who has been forced to flee their home country due to persecution, conflict, or violence and is unable to return because of a well-founded fear of being persecuted for reasons such as race, religion, nationality, or political opinion. Refugees seek safety in another country and are protected under international law.

OCHA - United Nations Organisation for the Coordination of Humanitarian Affairs

Sendai Framework - is an international agreement that aims to reduce disaster risk and losses in lives, livelihoods, and health. It was adopted by UN member states in 2015 and provides a roadmap for countries to increase their resilience to disasters.

UNHCR - United Nations High Commissioner for Refugees

Theory of Change (ToC) - A theory of change describes how we believe change could happen and outlines the main elements for that change. It helps us understand our goals, plan our actions, communicate our change, and evaluate our impact. It is a journey from problem to goal.

WHS - World Humanitarian Summit

Methodology for collection and analyses of data used to create the Emergency World Watch List: Initial “red flagging” exercise using 74 quantitative and qualitative variables The IRC’s Emergency Watchlist team compiled 74 quantitative and qualitative variables from 14 different datasets including Verisk Maplecroft, INFORM, the Danish Refugee Council, Council on Foreign Relations, International Crisis Group, Armed Conflict Location and Event Data (ACLED), the World Bank, Varieties of Democracy (V-DEM) and ACAPS. The team then identified which countries were consistently flagged across these variables, for example because they ranked in the top 25 countries, or the source qualitatively identified the country as facing a major risk over the year ahead.



contact us

We'd love to hear from you!



Phone Number

+27 76 328 5889



Email Address

inbox@crisisresponsenetwork.net



Website

www.crisisresponsenetwork.net

